

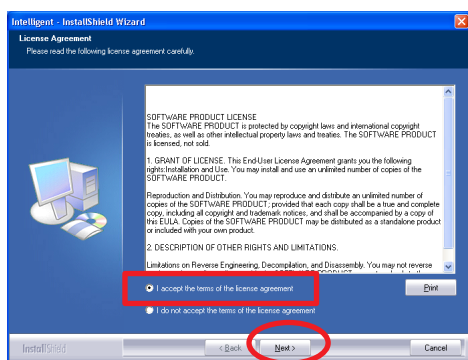
802.11b/g/n Micro Mini Wireless LAN USB2.0 Adapter

Quick Installation Guide

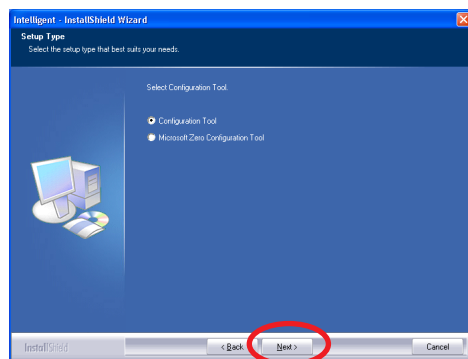
Windows 2000/XP Installation

Software Installation

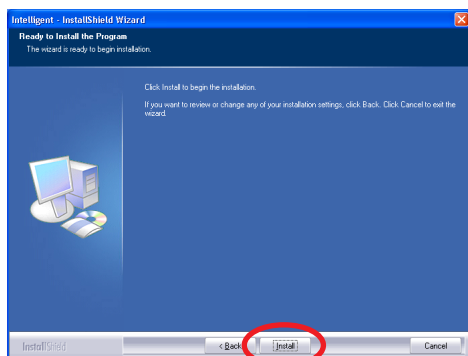
- 1 Insert the included CD-ROM into the CD-ROM drive of your computer.
- 2 When the main screen appears, click **Driver & Utility installation** to continue.
- 3 When the **License Agreement** screen appears, please read the contents and select **"I accept the terms of the license agreement"** then click **Next** to continue.



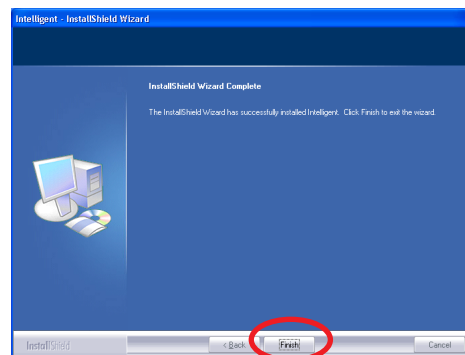
- 4 Select the check box to choose a configuration tool from the listed two choices.
 - **Configuration Tool:** Choose to use our configuration utility.
 - **Microsoft Zero Configuration Tool.**Click **Next** to continue.



- 5 When you are prompted the following message, please click **Install** to begin the installation.



- 6 When the following screen appears, click **Finish** to complete the software installation.



Hardware Installation

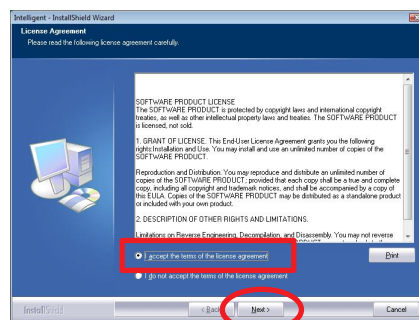
Note: Insert the Wireless USB adapter when you finished your software installation.

Insert the USB adapter into the USB port of your computer. The system will automatically detect the new hardware.

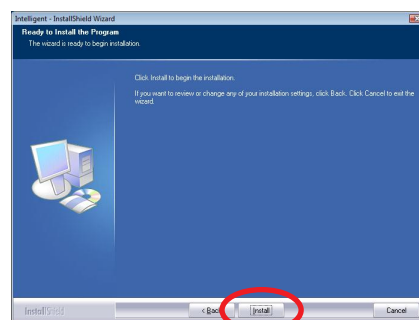
Windows Vista Installation

Software Installation

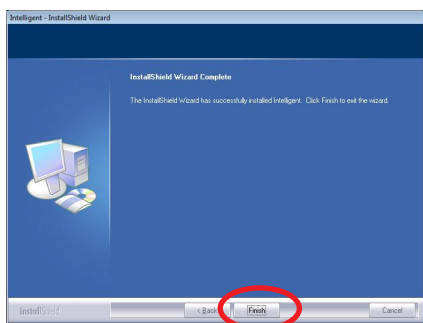
- 1 Insert the included CD-ROM into the CD-ROM drive of your computer.
- 2 When the main screen appears, click **Driver & Utility installation** to continue.
- 3 When the **License Agreement** screen appears, please read the contents and select **"I accept the terms of the license agreement"** then click **Next** to continue.



- 4 When you are prompted the following message, please click **Install** to begin the installation.



- 5 When the following screen appears, click **Finish** to complete the software installation.



Hardware Installation

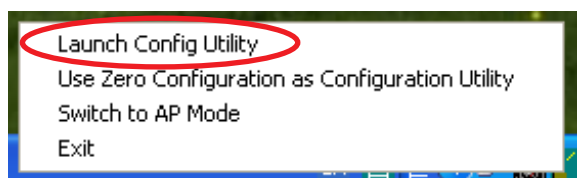
Note: Insert the Wireless USB adapter when you finished your software installation.

Insert the USB adapter into the USB port of your computer. The system will automatically detect the new hardware.

Utility Configuration for Windows 2000/XP

After the wireless adapter has been successfully installed, users can use the included Configuration Utility to do their settings.

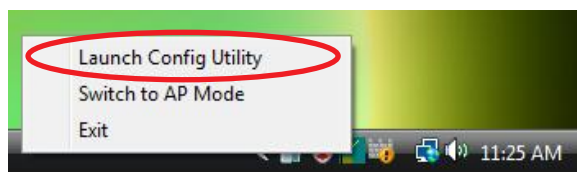
1. Go to **Start > (All)Programs > Intelligent Wireless > Intelligent Wireless Utility**.
2. You can also open the Configuration Utility by double clicking the icon or right clicking to select **Launch Config Utility**.



Utility Configuration for Windows Vista

After the wireless adapter has been successfully installed, users can use the included Configuration Utility to do their settings.

1. Go to **Start > All Programs > Intelligent Wireless > Intelligent Wireless Utility**.
2. You can also open the Configuration Utility by double clicking the icon or right clicking to select **Launch Config Utility**.



Note: This wireless USB adapter also supports soft AP mode, please consult the User Guide in the included CD-ROM for detailed settings.

Profile Tab

Profile can book keeping your favorite wireless setting among your home, office, and other public hot-spot. You may save multiple profiles, and activate the correct one at your preference.

Network Tab

The Network page displays the information of surrounding APs from last scan result. The tab lists the information including SSID, Network type, Channel, Wireless mode, Security-Enabled and Signal.

Link Status Tab

Click the triangle button at the lower right corner of the window to expand the link status. The link status page displays the detail information of current connection.

Advanced Tab

This Advanced page provides advanced and detailed settings for your wireless network.

Statistics Tab

The Statistics page displays the statistics on your current network settings.

WMM/QoS Tab

The WMM page shows the Wi-Fi Multi-Media power save function and Direct Link Setup that ensure your wireless network quality.

WPS Tab

The primary goal of Wi-Fi Protected Setup (Wi-Fi Simple Configuration) is to simplify the security setup and management of Wi-Fi networks. The STA as an Enrollee or external Registrar supports the configuration setup using PIN (Personal Identification Number) configuration method or PBC (Push Button Configuration) method through an internal or external Registrar.

Radio On/Off Tab

Click this Radio On/Off button to turn on or off radio function.

About Tab

This page displays the information of the wireless adapter, such as Config Version/Date, Driver Version/ Date, EEPROM Version, Firmware Version and Phy_Address.