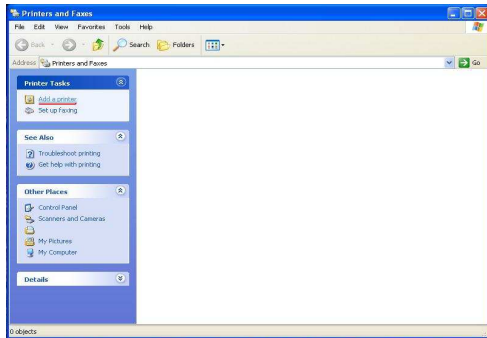


USB TO HPCN36M Product Use

1. Turn on the printer and install it as the following steps:



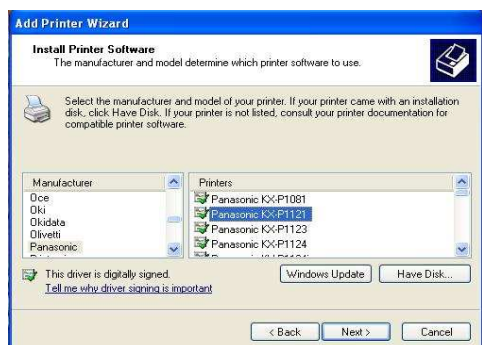
2. Find "Printer and Faxes" from the "Control Panel" of the computer, and click "Add printer option" on the left

3. Operate as the instruction



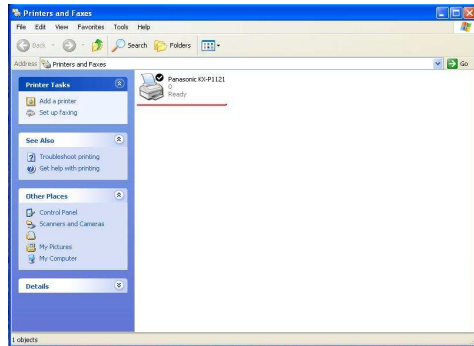
4. Choose the first option and click "next s

5. Choose USB001port and click "next s



6. Choose the Brand and Type of your printer here

7. Operate as the instruction till the end



8. If there's no errors in the process, there will be a new printer shown as above picture after installation, and the type of the printer should be the same as the one you choose during the installation.