

# **AX88772C/AX88772B/AX88772A/AX88760/AX88772 Mac OS X Driver Installation Guide**

Revision 3.00  
Feb. 20<sup>th</sup>, 2014

## Revision History

Revision	Date	Description
1.00	2010/08/12	Initial release.
1.10	2011/04/27	Modified the script files in Appendix.
1.20	2011/08/15	Added Mac OS X 10.7 support.
1.30	2011/09/14	Modified the description to exclude Mac OS X 10.4 support.
1.31	2011/10/13	Rearranged the document format and added more detailed driver installation/uninstallation procedures information.
1.32	2011/10/14	1. Moved some Section 1 descriptions to Appendix A.
2.00	2012/08/03	1. Changed the document name to "AX88772B/AX88772A/AX88760/AX88772 Mac OS X Driver Installation Guide". 2. Removed AX88178 related information. 3. Added Appendix C "Apple Mac OS X Native USB to LAN Drivers Supported Devices List". 4. Modified some descriptions in Section 1 and 2.
2.01	2012/08/22	1. Added Section 4 "Troubleshooting".
2.02	2012/09/26	1. Modified some descriptions in Section 1.
2.10	2013/03/08	1. Added AX88772C related strings. 2. Added Section 4-1 "How to identify the Vendor ID and Product ID of your USB dongle?". 3. Modified some descriptions in Section 2, 3, 4 and Appendix B.
3.00	2014/02/20	1. Modified to support Mac OS X 10.9 driver installer. 2. Removed "4-2. Driver Installation Failure on OS X 10.8 Issue", "Appendix A. Script Files Descriptions" and "Appendix B. AX88772C/772B/772A/760/772 Script Files" sections. 3. Replaced Section 4-2 "Driver Installation Failure on OS X 10.8 Issue" with new Section 4-2 "How to identify authentic ASIX USB to LAN Product". 4. Modified some descriptions in Appendix A.

## **Contents**

<b>1. Introduction .....</b>	<b>4</b>
<b>2. Driver Installation Procedures .....</b>	<b>4</b>
<b>3. Driver Uninstallation Procedures .....</b>	<b>9</b>
<b>4. Troubleshooting .....</b>	<b>10</b>
4-1. How to identify the Vendor ID and Product ID of your USB dongle? ..	10
4-2. How to identify authentic ASIX USB to LAN product? .....	11
<b>Appendix A. Apple Mac OS X Native USB to LAN Drivers</b>	
<b>Supported Devices List .....</b>	<b>13</b>

## 1. Introduction

This document contains the installation and uninstallation information of ASIX's AX88772C/AX88772B/AX88772A/AX88760/AX88772 Mac OS X 10.5 to 10.8 driver and Mac OS X 10.9 driver.

The native "AppleUSBEthernet" driver on Mac OS X 10.5 to 10.9 systems already support AX88772A/AX88760/AX88772 dongles so users need not to manually install ASIX's standard AX88772A/AX88760/AX88772 Mac OS X driver if you don't have any issue on Apple's native driver.

The native "AppleUSBEthernet" driver of Mac OS X 10.5 to 10.9 systems doesn't support AX88772C/AX88772B dongles yet so users MUST manually install the latest AX88772C/AX88772B Mac OS X driver.

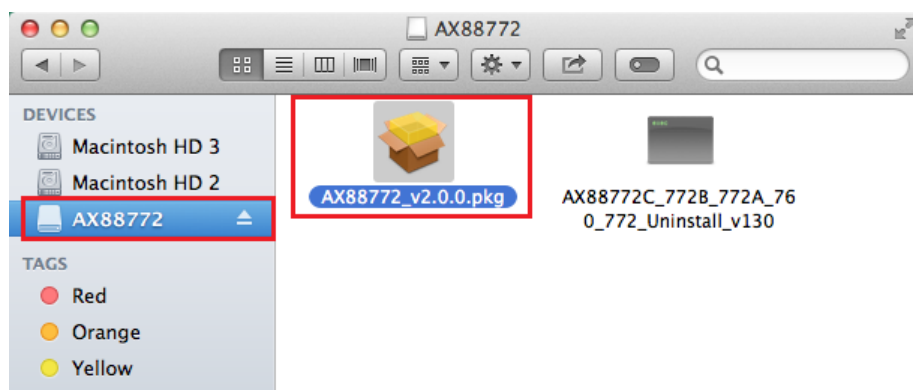
Some USB to LAN dongles have manufacturers' own VID/PID or have non-authentic ASIX product inside. If both Apple's native driver and ASIX's standard driver couldn't work fine with your USB-to-LAN dongle, please contact the support guys of your USB-to-LAN dongle manufacturer for further support.

## 2. Driver Installation Procedures

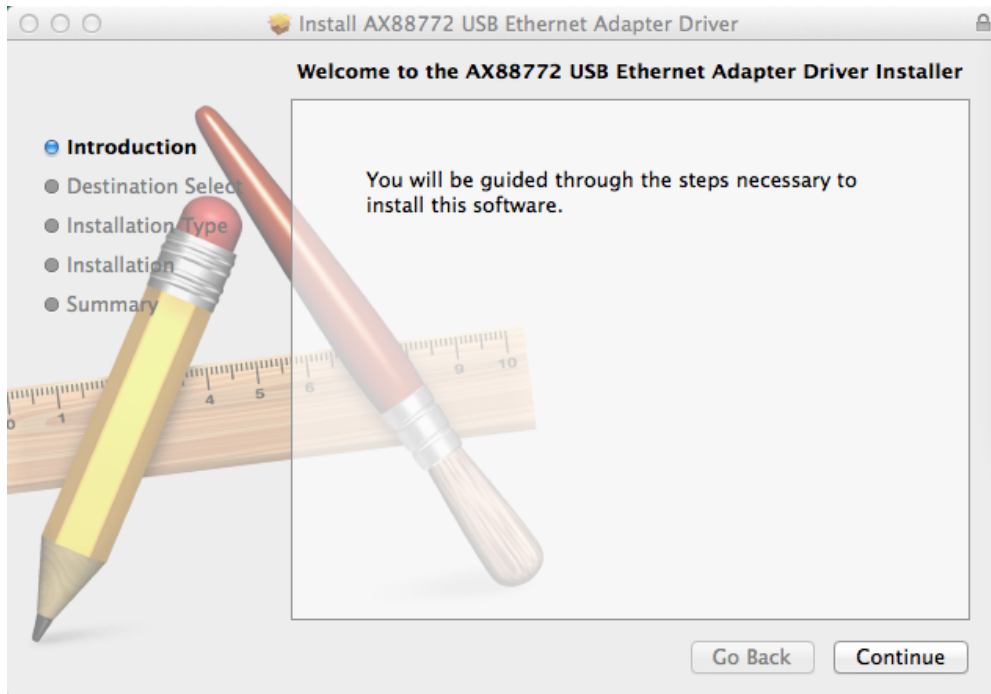
The AX88772C/772B/772A/760/772 Mac OS X driver installation package is "**AX88772.dmg**".

The following is an example of ASIX's AX88772C/772B/772A/760/772 Mac OS X driver installation procedures.

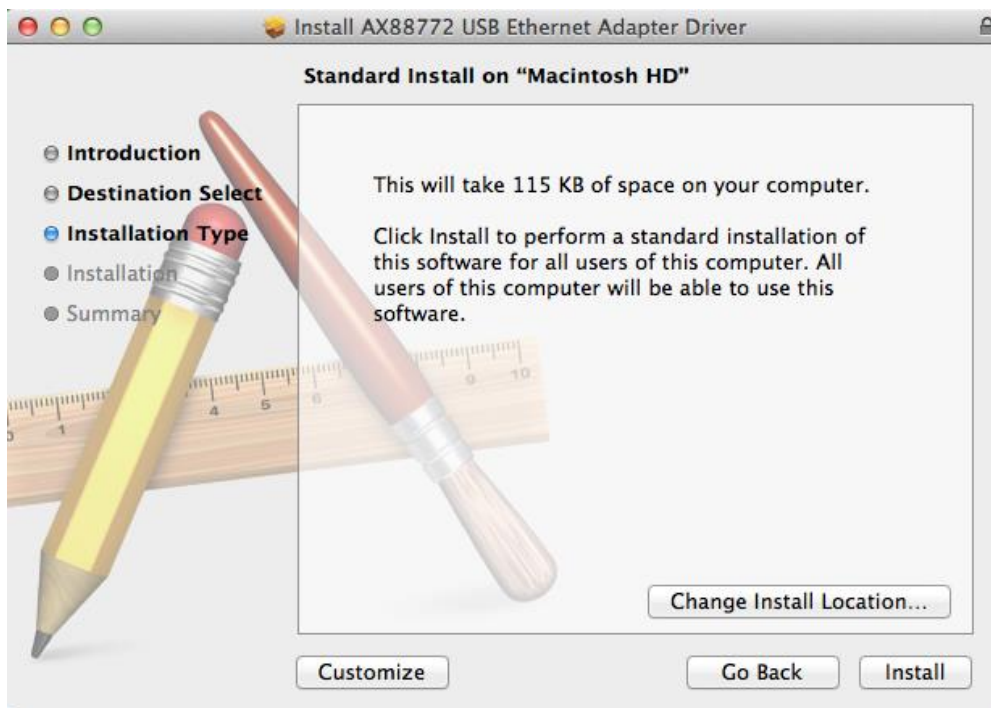
Step 1: Click the "AX88772.dmg", the following "AX88772" virtual disk will be appeared on the Devices list of your Mac OS X system. (This "AX88772" virtual disk will be auto-removed after rebooting Mac OS X system.)



Step 2: Click the “AX88772\_vx.x.x.pkg” (“x.x.x” is driver revision number), the following driver setup dialog will appear. Click the [Continue] button to start the installation operation and follow the instructions to continue the installation.



Step 3: Click the [Install] button to continue the installation operation.



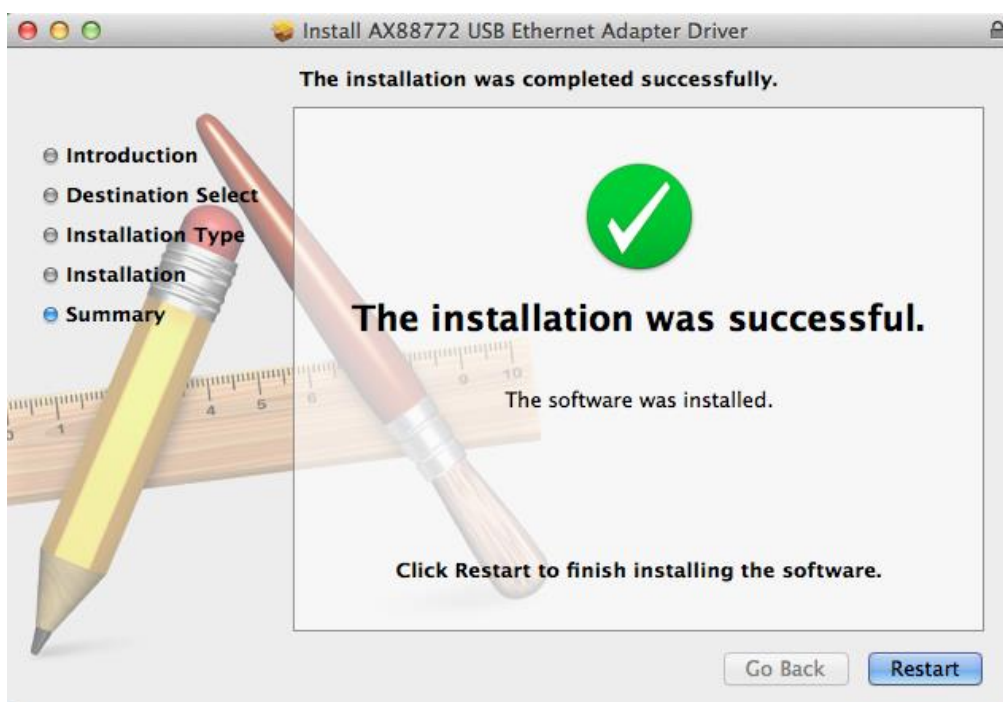
Step 4: You might need to enter your user/password during the driver installation.



Step 5: Click the [Continue Installation] button to continue the installation operation.

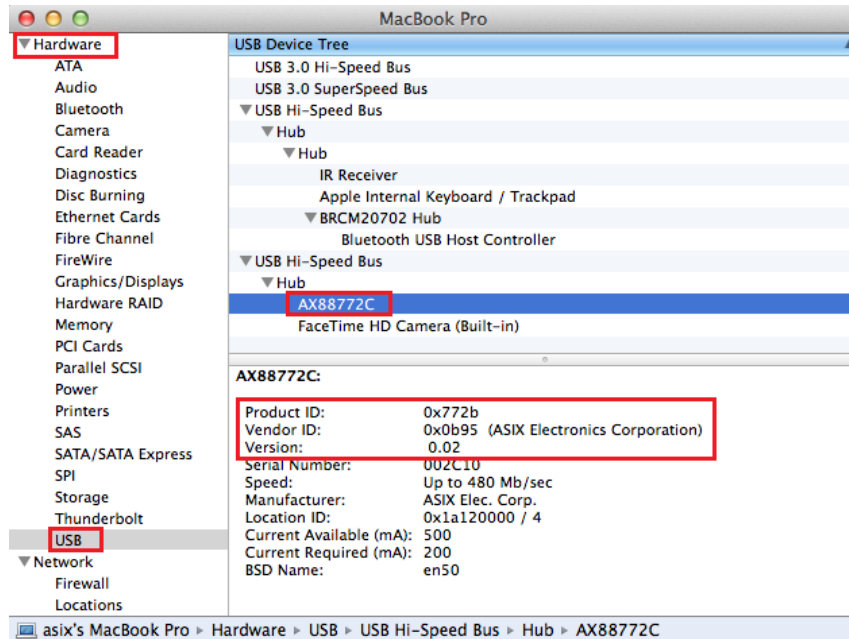


Step 6: Click the [Restart] button to restart Mac OS X system to take effect the revised driver installation.



Step 7: After booting up your Mac OS X system, plug your AX88772C/772B/772A/760/772 USB dongle onto the USB port of your Mac OS X system and refer to the following information to double check if your USB dongle had been identified properly by Mac OS X system and the AX88772C/AX88772B/AX88772A/AX88760/AX88772 Mac OS X driver was installed correctly or not.

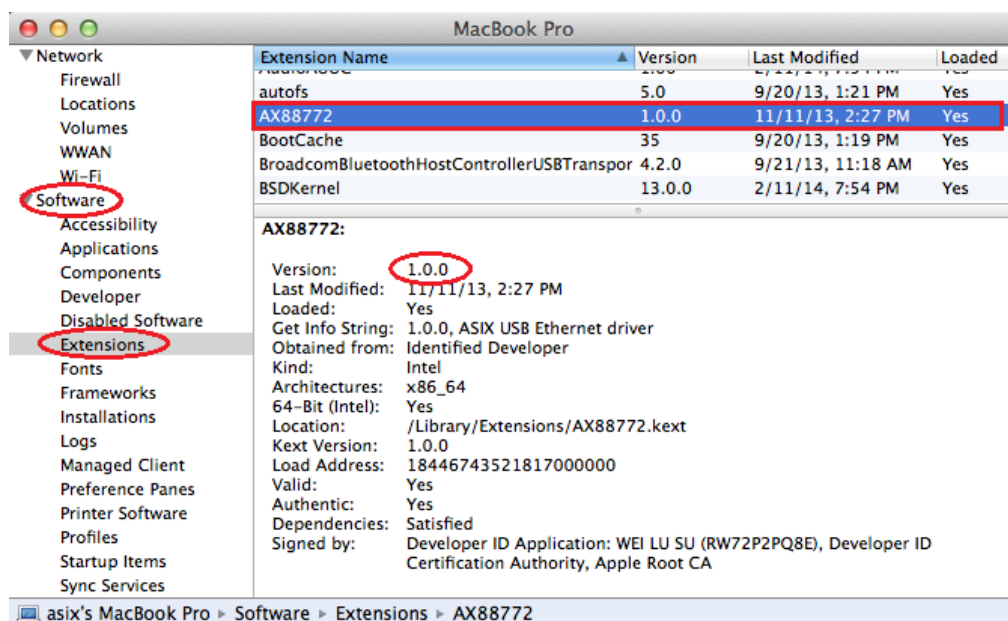
(1) You can check the Vendor/Product ID information of your USB dongle from here.



(2) You can check the installed AX88772C/AX88772B/AX88772A/AX88760/AX88772 Mac OS X driver version information by running the "kextstat" command or referring to below figure.

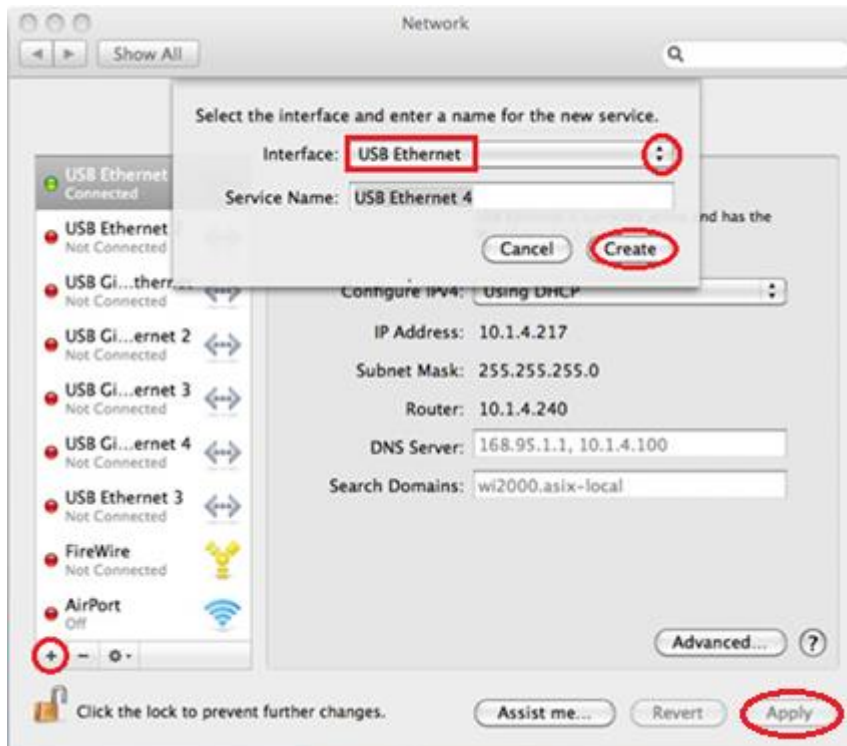
Tsengteki-MacBook-Air:~ allan\$ kextstat

```
Index Refs Address      Size   Wired   Name (Version) <Linked Against>
131   0 0xfffff7f80a49000 0x9000 0x9000  com.asix.driver.ax88772 (1.0.0) <45 36 7 5 4 3 1>
...
```

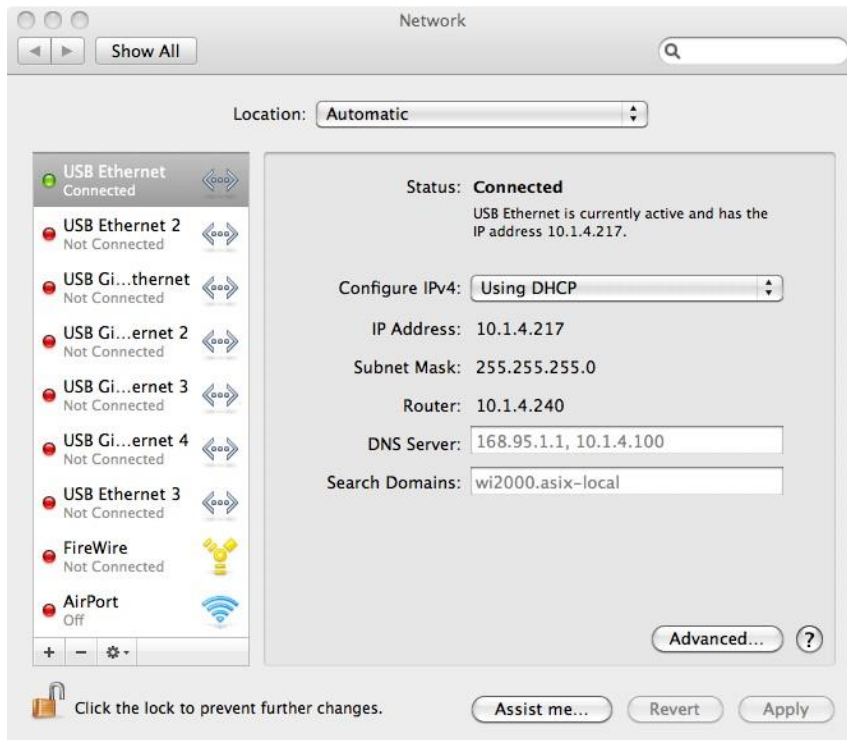




Step 8: Please refer to below figure to add a new “USB Ethernet” network interface and then press the [Apply] button to take effect the new network interface.



Step 9: The new “USB Ethernet” driver should be ready now.

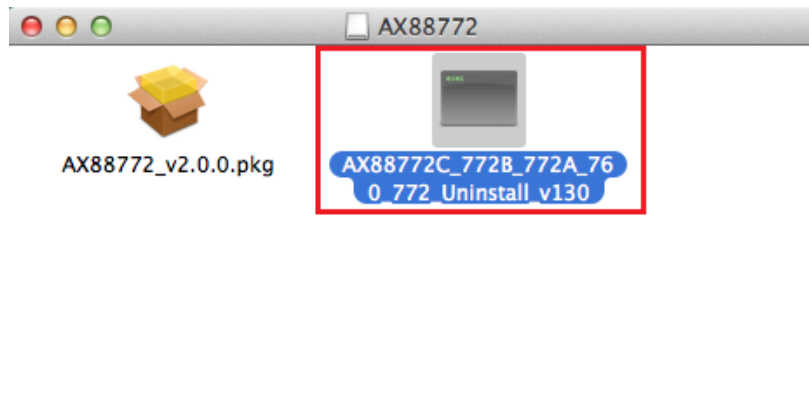




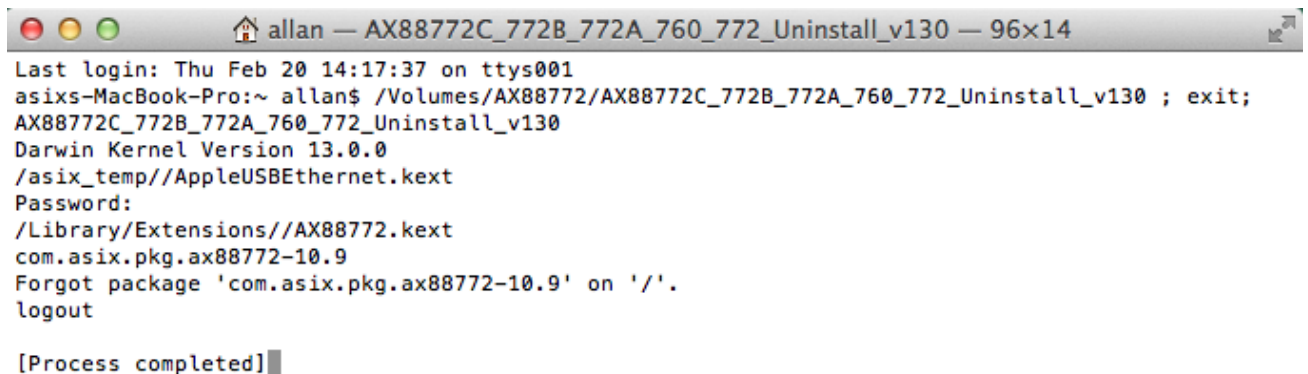
### 3. Driver Uninstallation Procedures

The following is an example of ASIX's AX88772C/772B/772A/760/772 Mac OS X driver uninstallation procedures.

Step 1: Click the "AX88772.dmg", the following "AX88772" virtual disk will be appeared on the Devices list of your Mac OS X system. (This "AX88772" virtual disk will be auto-removed after rebooting Mac OS X system.)



Step 2: Click the "**AX88772C\_772B\_772A\_760\_772\_uninstall\_vxxx**" utility (xxx is the revision number of the driver uninstaller utility) to uninstall ASIX's AX88772C/772B/772A/760/772 Mac OS X driver. (You might need to enter your user password to finish the driver uninstallation operation)



```
Last login: Thu Feb 20 14:17:37 on ttys001
asixs-MacBook-Pro:~ allan$ /Volumes/AX88772/AX88772C_772B_772A_760_772_Uninstall_v130 ; exit;
AX88772C_772B_772A_760_772_Uninstall_v130
Darwin Kernel Version 13.0.0
/asix_temp//AppleUSBEthernet.kext
Password:
/Library/Extensions//AX88772.kext
com.asix.pkg.ax88772-10.9
Forgot package 'com.asix.pkg.ax88772-10.9' on '/'.
logout

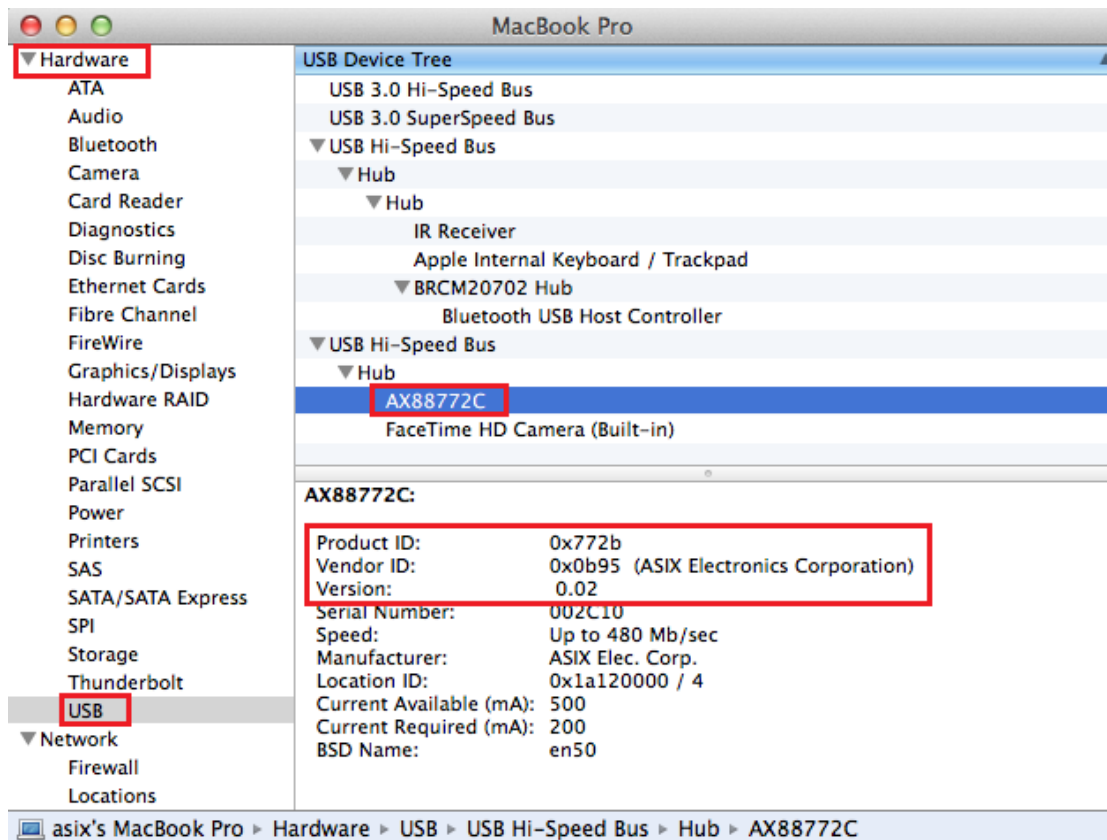
[Process completed]
```

## 4. Troubleshooting

(The figures in this section are examples for your reference)

### 4-1. How to identify the Vendor ID and Product ID of your USB dongle?

Please refer to below picture to make sure if the Vendor ID and Product ID of your USB dongle are ASIX's default values or not? If no, please contact the manufacturer of your USB dongle to get a proper driver directly.



## 4-2. How to identify authentic ASIX USB to LAN product?

Some USB to LAN dongles use ASIX's default VID/PID but have non-authentic ASIX USB to LAN product inside. In order to identify these non-authentic ASIX USB to LAN products, please download the latest ASIX USB to LAN drivers from ASIX web site (<http://www.asix.com.tw/products.php?op=ProductList&PLine=71>) and refer to below procedures to make sure if your USB to LAN dongles include authentic ASIX USB to LAN product or not.

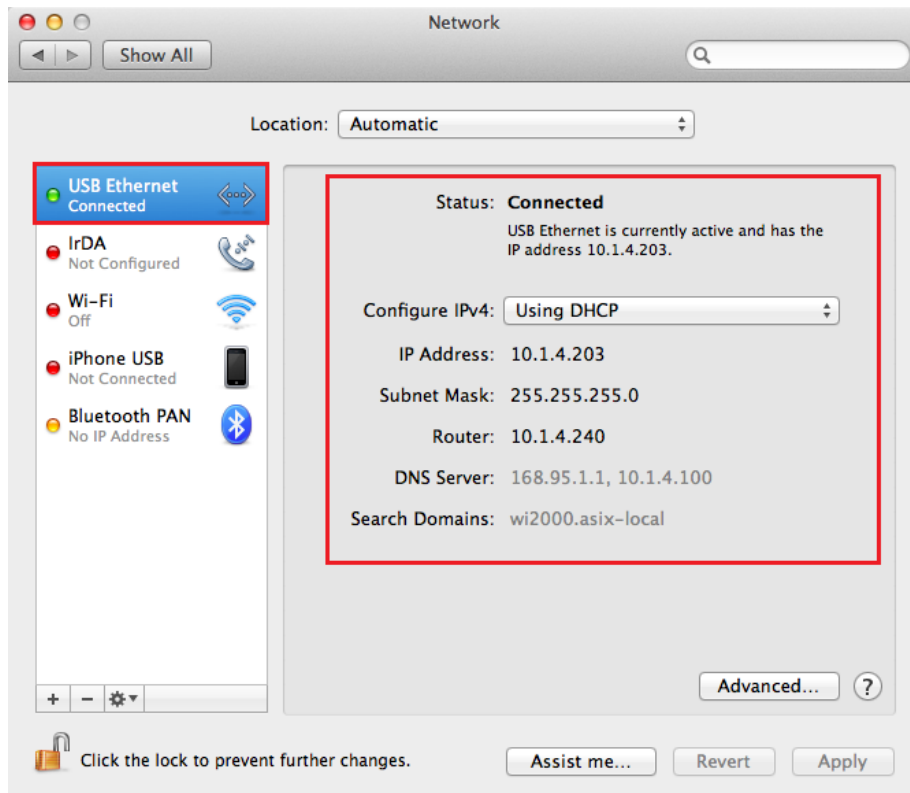
You can refer to below table to identify which ASIX product drivers should be downloaded.

ASIX Product	ASIX Vendor ID	Product ID
AX88772C	0B95h	772Bh
AX88772B	0B95h	772Bh/7E2Bh
AX88760	0B95h	772Ah
AX88772A	0B95h	772Ah
AX88772	0B95h	7720h

Figure 1. ASIX USB to LAN Products Default VID/PID

1. Download the latest ASIX USB to LAN Mac OSX driver from ASIX web site (<http://www.asix.com.tw/products.php?op=ProductList&PLine=71>).
2. Refer to [Section 2](#) to install the ASIX USB to LAN Mac OSX driver on your Mac OSX platform and make sure if the driver can be installed successfully or not?

If your USB to LAN device is ASIX product inside, you should install ASIX USB to LAN Mac OSX driver successfully as below figure.



3. If you can't install ASIX USB to LAN driver successfully, you can refer to below figure to double check if your USB to LAN device has an authentic ASIX's product inside or not? If your USB to LAN device is Non-authentic ASIX product inside, you should see below "**Non-authentic ASIX product, ASIX does not support it.**" error message by running the "**sudo dmesg**" command on the Mac OSX Terminal console.

If you found your USB to LAN dongle has non-authentic ASIX USB to LAN product inside, you should contact the manufacturer of your dongle to get proper drivers directly.

#### **Authentic ASIX product normal driver messages:**

```
AX88772: start - Version number 1.0.0
AX88772: Input buffers 64, Output buffers 64
flow_divert_kctl_disconnect (0): disconnecting group 1
AX88772: enable - Exit
AX88772::monitorLinkStatus - Link down
AX88772::monitorLinkStatus - Link up at 100 Mbps - Full Duplex (PHY regs 5,6:0xc1e1,0x000b)
...
AX88772: willTerminate
AX88772: disable - Link down.
AX88772: disable - Exit
AX88772: didTerminate
AX88772: stop - Exit
...
```

#### **Non-authentic ASIX product error messages:**

```
AX88772: start - Version number 1.0.0
AX88772: Non-authentic ASIX product, ASIX does not support it.
.....
```

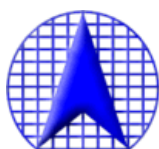
## Appendix A. Apple Mac OS X Native USB to LAN Drivers Supported Devices List

Apple native drivers "AppleUSBEthernet" and "AppleUSBGigEthernet" on Mac OS X 10.5 to 10.9 systems already support the following AX88178/AX88772A/AX88760/AX88772 USB-to-LAN dongles.

Vendor	Model Name	VID	PID	Comments
ASIX Electronics Corp.	AX88178	0B95h	1780h	
ASIX Electronics Corp.	AX88772A/AX88760	0B95h	772Ah	
ASIX Electronics Corp.	AX88772	0B95h	7720h	
Apple	Apple USB Ethernet Adapter	05ACh	1402h	
Linksys	USB200M	13B1h	0018h	
D-Link Corp.	DUB-E100 Fast Ethernet	2001h	3C05h	
Linksys	USB1000	1737h	0039h	
Belkin Components	F5D5055	050Dh	5055h	
MelCo., Inc.	USB Gigabit Ethernet	0411h	006Eh	
I-O Data Device, Inc.	ETG-US2	04BBh	0930h	

For the other USB-to-LAN dongles with ASIX solution inside, please download the latest ASIX's standard Mac OS X drivers from ASIX web site (<http://www.asix.com.tw/download.php?sub=driver>). If you still have problems, please contact the support guys of your USB-to-LAN dongle manufacturer for further support.

**Note:** Users should get proper driver from the manufacturer of your USB-to-LAN dongle if both Apple's native driver and ASIX's standard driver couldn't work with your USB-to-LAN dongle.

**ASIX** Electronics Corporation.

**4F, No.8, Hsin Ann Rd., Hsinchu Science Park,  
Hsinchu, Taiwan, R.O.C.**

**TEL: +886-3-5799500**

**FAX: +886-3-5799558**

**Email: [support@asix.com.tw](mailto:support@asix.com.tw)**

**Web: <http://www.asix.com.tw>**